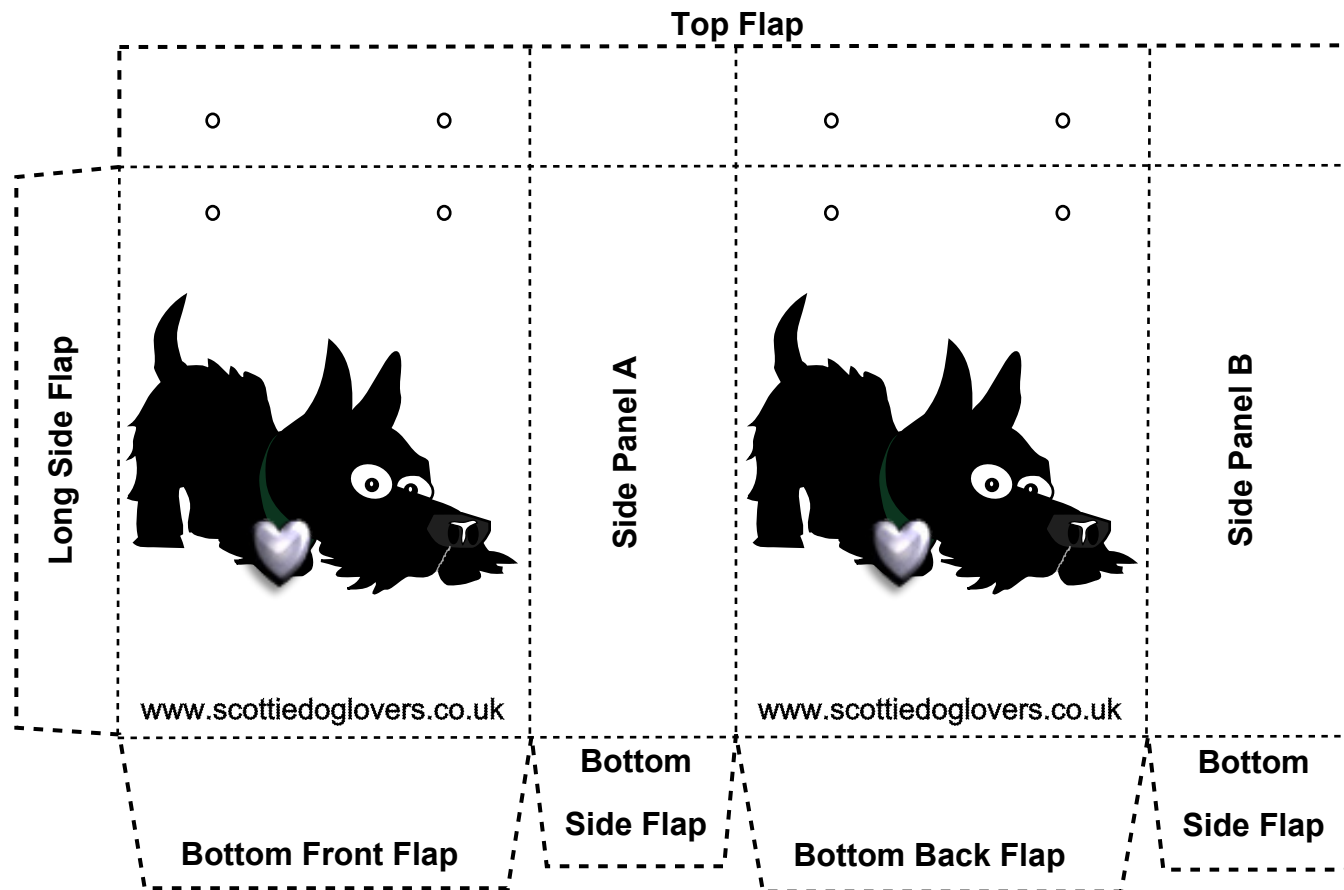


## 'Rabbie' Gift Bag Instructions

- Print Page 2 onto your card and carefully cut around the outside edge.
- Score along all the remaining dotted lines to make folding easier.
- Fold down the top flap and secure it to the inside of the bag, using double-sided sticky tape or glue.
- Secure the bottom of the bag (4 flaps) to each other, using double-sided sticky tape or glue. Fold in the 2 bottom side flaps first.
- Secure side Panel B to the Long Side flap, using double-sided sticky tape or glue.
- Punch 4 holes where indicated.
- Use ribbon, fibres, etc to create handles for carrying or hanging.





[www.scottiedoglovers.co.uk](http://www.scottiedoglovers.co.uk)



[www.scottiedoglovers.co.uk](http://www.scottiedoglovers.co.uk)